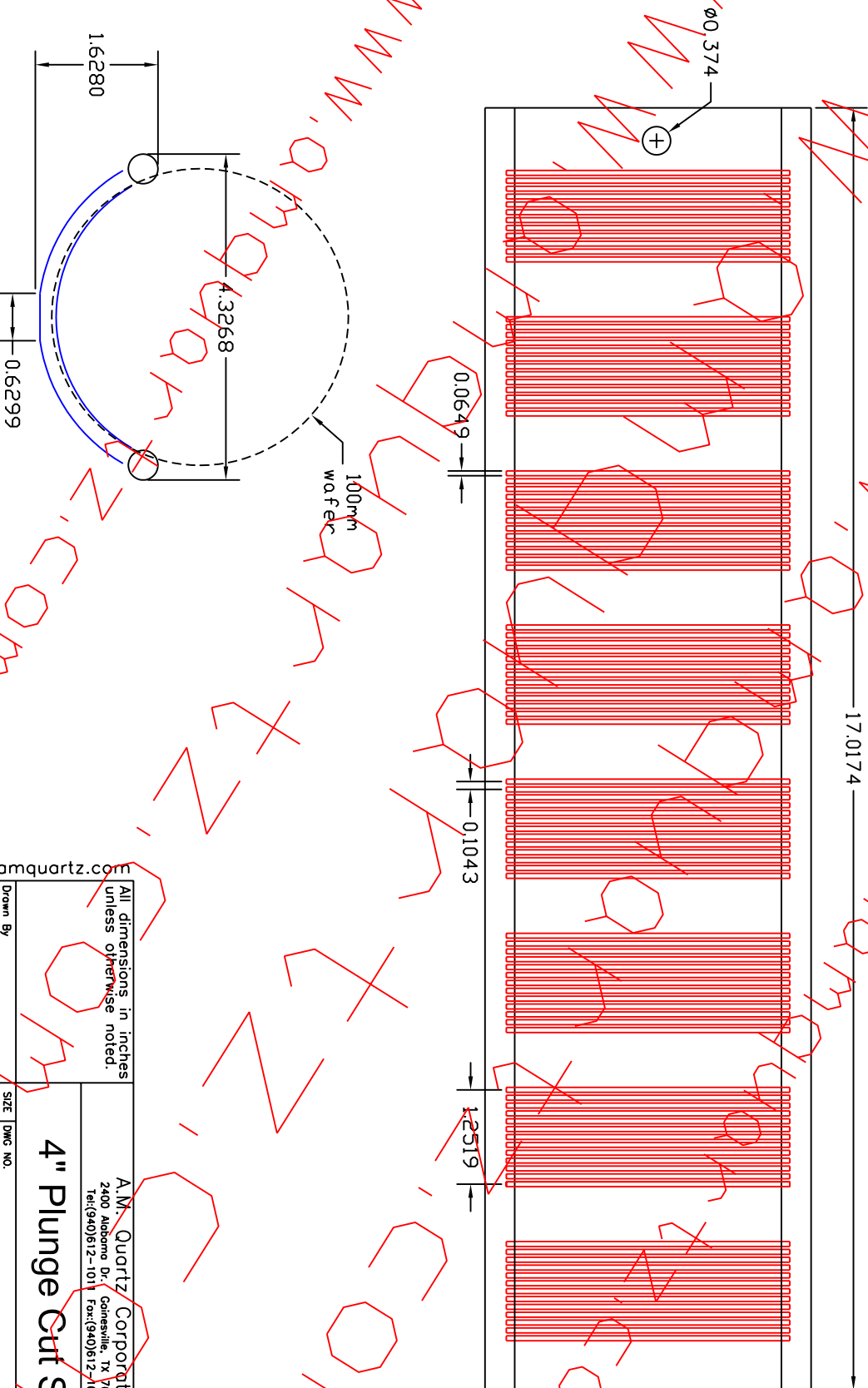


REVISIONS				
ZONE	REV	DESCRIPTION	DATE	APPROVED



www.amquartz.com

All dimensions in inches unless otherwise noted.

A.M. Quartz Corporation
 2400 Alabama Dr. • Gainesville, TX 76240
 Tel:(940)612-1011 Fax:(940)612-1014

4" Plunge Cut Shell

Drawn By	Material	Semiconductor Grade	Quartz
SIZE	DWG NO.	Date	Sheet
Scale	REV		